

Matters needing attention

Thank you for purchasing our intelligent electric suction door. We believe that this product can bring you a comfortable, safe and convenient driving experience.

This manual will introduce the function, installation and performance of audi series intelligent electric suction door system. Before using this product, the user shall read this instruction manual in detail.

In order to ensure the normal use of the product, please operate according to the installation of this manual, so as to avoid loss and damage caused by improper operation.

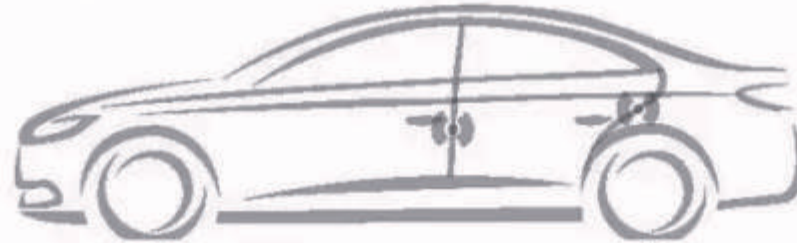
The intelligent electric suction door and its accessories are owned by the company, protected by the laws of the People's Republic of China.

Product function introduction

1. Gently close the door. When the door lock reaches level I lock, the electric door suction motor will start to quietly suck in the door and lock it, and the parts of the door lock will automatically return to the original position.

2. The traditional door USES inertial force locking device, which requires a greater force to completely close, so that not only will produce a lot of noise, but also can make the airtight inside the car instantly produce pressure, make the eardrum and body feel uncomfortable and uncomfortable. After installing intelligent electric suction door, this kind of discomfort can be effectively removed. Especially in the case of small parking space, only gently close the door, electric suction door automatically closed, convenient and comfortable.

3. The electric suction door is generally only equipped with high-end luxury models. The intelligent electric suction door can also bring you high-end comfortable, convenient and safe driving enjoyment.



Directions for use

* automatic suction: after parking, gently push/pull the door into the distance of about 6mm with your hand, the electric suction door motor will start, quietly inhale the door, and close the door until it is completely closed; The parts of the door lock automatically return to the original position. The doors can be reopened at any time.

* manual closing: when manually closing the door lock, the suction function of the electric suction door will also work to ensure that the door is completely closed.

Product assembly, transportation and storage

Installation environment: the installation site should be kept clean and tidy. No foreign bodies or debris should be mixed into the lock.

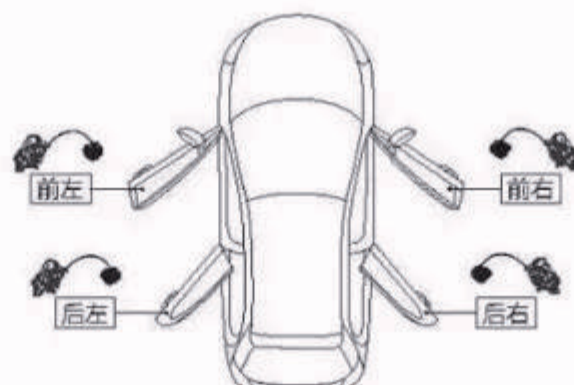
Box item: the packed products can be transported by normal sea, land and air transportation. In the process of transportation, attention should be paid to take drenching prevention measures to avoid direct exposure to the hot sun and strong impact, collision and vibration.

Storage: packaging equipment shall be at ambient temperature - 40 ° C to + 80 ° C, relative humidity below 80%, Zhou, acid and other corrosive gas and magnetic field of storage in the warehouse. Storage period is 2 years, more than 2 years of products should be unpacked inspection, re-inspection qualified before entering the field of circulation.

Product maintenance and repair

1. Do not install or repair your products by yourself.
2. The installation or repair of this product by personnel not trained in electronic equipment and auto parts may lead to the occurrence of risks.
3. Please pay attention to all the items in this manual, and strictly abide by caicare's instructions.
4. Do not contact the product with liquid, otherwise it may cause short circuit or damage.
5. Do not place the product in the sun or high temperature for a long time, or it may cause failure.
6. Means used in the following temperature range. Temperature range of use: - 3 50c - + 75 ° c temperature range. To 40 ° c - + 50 ° c.

1. installation position on the vehicle



2. list of accessories



Part of the locks Motor parts

Suction door assembly



Negative power cord



Positive power cord



Warranty card



Certificate of approval

3. Required tools

Electrical tape, plastic pry knife, all kinds of specifications of sleeve, cross screwdriver, word screwdriver and bucket.

4. Matters needing attention in disassembling and assembling

1. To ensure the safety of operation before installation, remove the negative terminal of the battery before operation. Please check the type of parts and the number of excessive is complete, before installation to fragile, easy to scratch parts with pearl cotton wrapped.
 2. In order to ensure the safety and normal use of the product, please install it by professional staff. Do not disassemble the machine without permission to avoid unnecessary damage.
 3. Check whether all keys on the door, glass lifting, original door lock opening, door closing and car locking are normal.
 4. Before operation, the installation staff must remove the metal objects or other hard objects carried on the body and place them outside the car to prevent scratches on the car seats, interior decorations and doors during operation.
 5. As there are many disassembled parts in the process of installation, please properly place the removed parts to ensure the smooth progress of subsequent recovery.
 6. Please wiring according to the installation flow chart to avoid affecting the moving parts of the automobile during wiring. After wiring, all wiring harnesses shall be fixed to prevent loosening and abnormal vibration.
 7. Do not plug or unplug the connected plug on line after the power is switched on, so as not to damage the main engine or the fuse of the original car, causing other damage and abnormalities.
 8. Before disassembling and reassembling all parts, please confirm whether the glue nails and clasps are intact. In case of damage, please be sure to replace them to avoid abnormal sound when driving.
- Operation space is small, be careful to screw into the car. If the screw falls into the car, be sure to take it out, otherwise the car will make an abnormal sound when walking.

A. Main driving door plate removal steps



1. Decorate panel with skid plate wei to open internal door handle (figure 1)



2. Small cover plate next to the armrest of skid plate (figure 2)



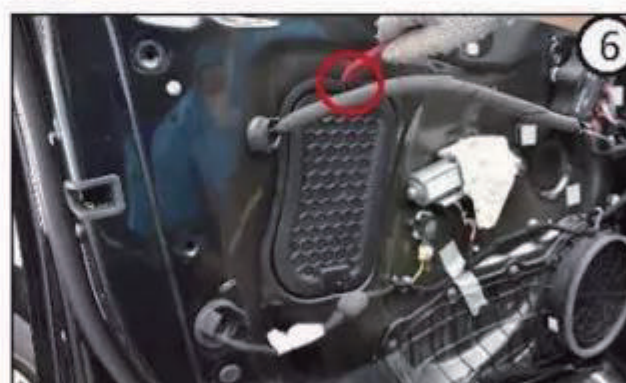
3. Three fixing screws for interior door trim plate in the unloading process (FIG. 3)



4. Use the skid plate to carefully pry the fastener around the interior door decoration plate of the driving door (note: check whether all the fixed screws on the interior door decoration plate are removed before prying) (figure 4)



5. Pull down the wiring harness and remove the interior door trim panel (figure 5)



6. Use the skid plate to pry open the sound insulation board and remove it (figure 6)



7. Open the front left door side key to enter the lock core screw rubber waste, remove the lock lock screw (figure 7)



8. Pry the key on the main driving door with a skid plate to enter the decorative cover plate of the lock core and take out the lock core (figure 8)



9. Carefully remove the original door lock from the side of the inner door (FIG. 9)



10. Remove the door lock of the original car and put it in good condition (figure 10)

Note: please take good care of the removed parts, screws and other original items, and do not lose them to prevent missing parts during subsequent installation

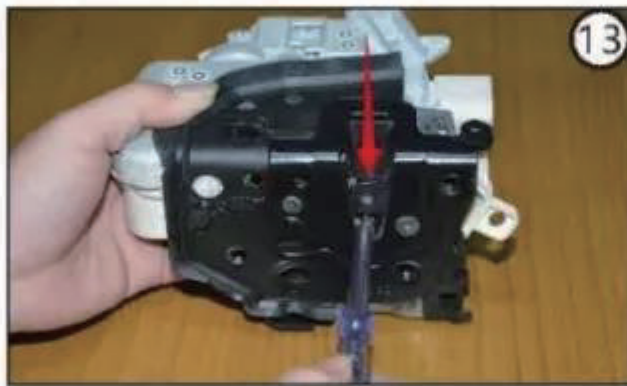
B. Schematic diagram of mechanical door lock removal



1. Place the door lock head on the fixed table and remove the original lock enclosure (figure 11)



2. Remove the pull rope of the inner door handle; Quick twist spring of valve, remove cover plate fixing screw (figure 12)



3. Press the lock tongue of the original car lock to the full lock position with a round rod less than M5 or a screwdriver; (this step pays special attention to prevent the door detection switch from being crushed when the lock core is separated from the central lock control unit) (figure 13)



4. Remove the machine of the original vehicle and lock 3 fixing screws (figure 14)



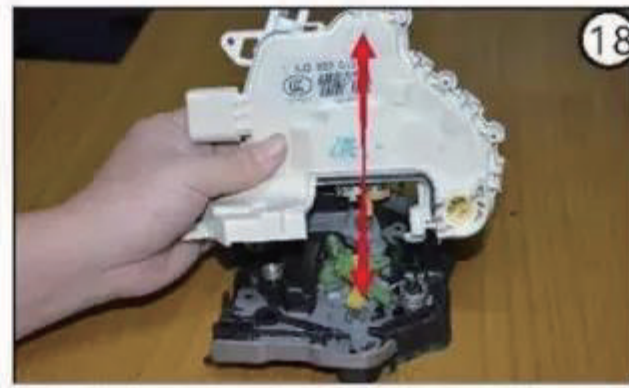
5. Place the I-type transmission arm on the lock of the original car door with tweezers and fix it to facilitate the next step of disassembly and separation (figure 15).



6. With tweezers or small word screwdriver top in the yellow sliding arm and the original door of the central control unit between the white main rotating link, force evenly carefully pry open to separate; (note: take care when prying to avoid damage to all parts of the original lock) (figure 16)



7. Use deterring or small single-word screwdriver on the top of the original door central control unit between the yellow main rotary link and the green sliding extension, force evenly and carefully pry open to separate them: (note: take care when prying to avoid damage to all parts of the original lock) (figure 17)



8. Pull apart the original central control unit of the lock and the lock core of the machine city in parallel with hands (figure 18)

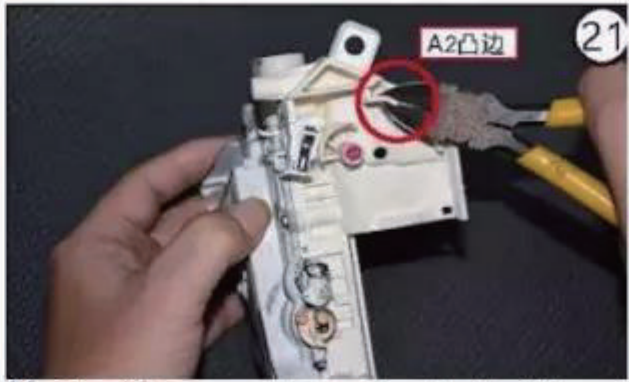


9. Comparison figure of the original door machine city lock core and the central control unit after partial separation (figure 19)

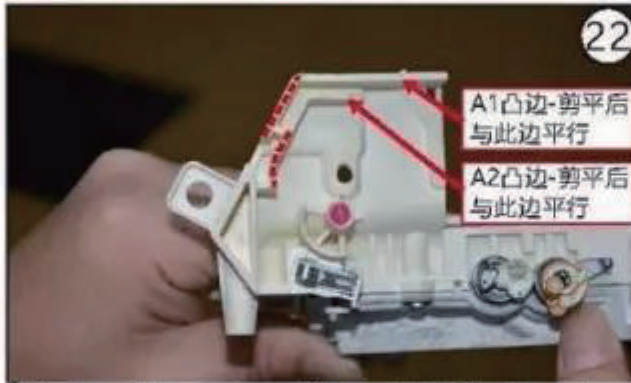
C. Assembly diagram of point suction door lock



1. Trim the A1 convex edge on the shell of the central control unit of the original door lock with pliers (please refer to the limited height supervision of Mafoping for the A1 convex edge in fig. 22) (fig. 20)



22. The A2 convex edge on the shell of the central control unit of the original door lock shall be cut flat with scissors (please refer to the height limit position of A2 convex edge to be cut flat in FIG. 22) (FIG. 21)



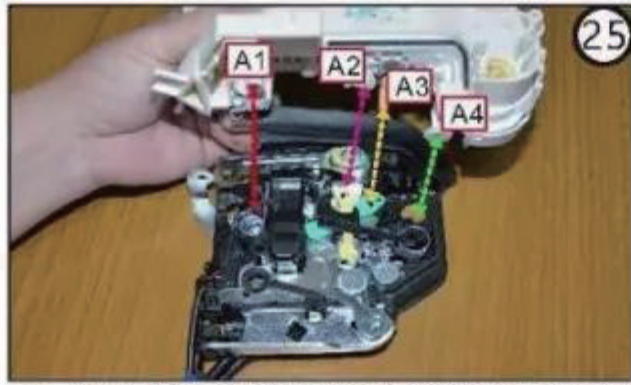
3 instructions should be paid attention to the processing of the shell of the central control unit of the original door lock (please refer to the instructions in the figure above for the processing of the clear installer. If you have any questions, please call the technical support of this product) (figure 22)



4. Use a circular bar with a diameter of 500mm to press the lock tongue on the electric suction door lock to the full lock position (this step pays special attention to prevent the door detection switch from being crushed when the lock core and the central lock control unit are assembled) (figure 23)



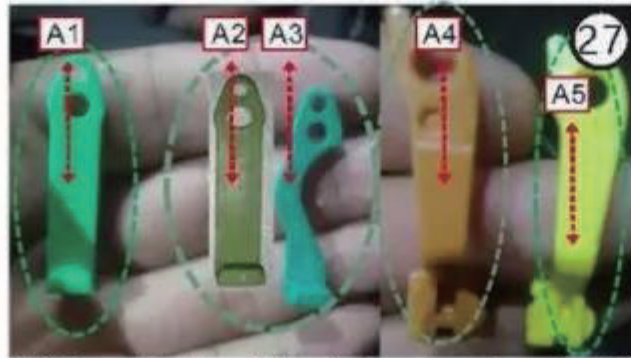
5. Before assembling the electric lock and the central control unit, please lay out and fix the L-type transmission arm on the electric lock, so as to facilitate the next step of installation (FIG. 24).



6. Assembly of the central control part and the electric lock core: A1 positioning column is aligned with the lock core positioning hole, A2 white main rotary link is aligned with the lock core dongle sliding arm mounting hole, and A3 American main rotary link is aligned with the large hole on the green sliding arm (diameter 4.0mm) A4 positioning column is gently pushed into the assembly position on the lock core to observe whether A1 and A4D are fully assembled (figure 25).



7. (1) with the authority of the child will be yellow green arm (A1) sets into the main rotating column connecting rod linkage installed, (2) the same with the saw white arm (A2) set into decyl color master rotating column connecting rod linkage installed (warning: please make sure the A1 and A2 connecting rod Pi are set into the corresponding blue, would not result in the door wouldn't open or lock phenomenon) (FIG. 26)



7. If the unlocking link of the original car lock is A3 bent, remove the bent link from the original car lock and replace it with the electric suction lock. It is impossible to open the door without replacing it with Lao. If the original car lock unlocks AZ of the connecting rod, it will not be replaced. (A1: electric lock unlock camp, A2/A3: original lock unlock arm, A4: original lock unlock arm, A5: electric lock unlock whip)



8. After the assembly is in place, move the black I-type transmission arm back to its original position (FIG. 27)

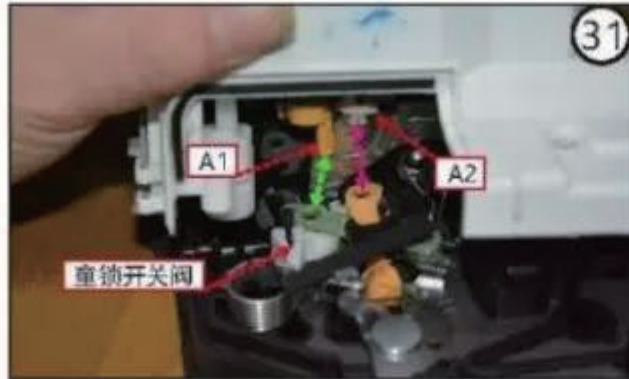


9. Tighten the fixed screw at the position as shown in figure 28.



10. Assemble the electric lock assembly (figure 29)

D. Schematic diagram of assembly of electric suction door lock

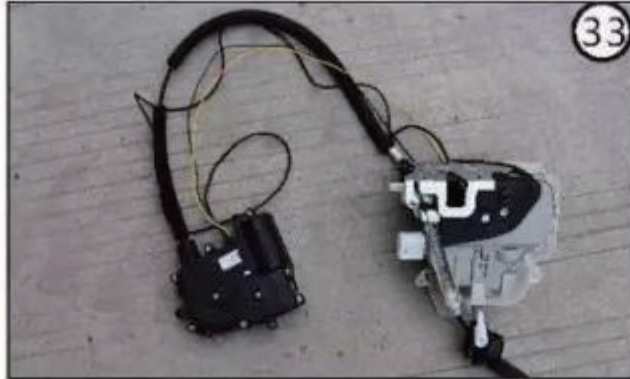


1. Assembly steps of rear door lock with child lock: (1) twist the white child lock switch valve to open the state A1. The positioning column of the yellow main rotating link passes through the hole on the green sliding arm and is positioned in the middle of the groove of the child lock switch valve. (please observe the details in the picture on the right) (2) insert (A2 white sliding arm) into the yellow main rotating link linkage column with tweezers and install it in place.



2. As shown in the figure: left back door lock - right back door lock on the child lock switch sliding groove (A1 and green sliding arm and child lock switch sliding groove on the right figure play a key driving principle, please pay attention to the details of the assembly in place) (figure 31)

E. Motor box installation steps



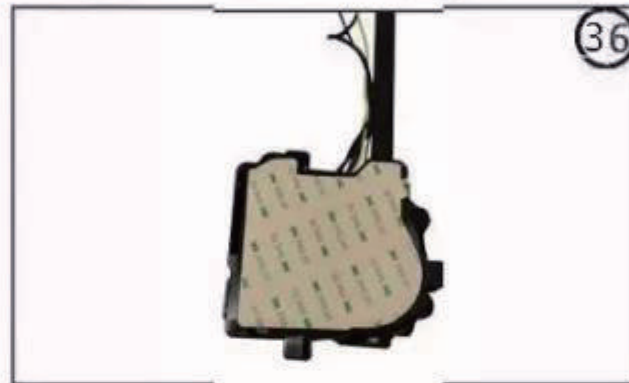
1. Electric suction door lock assembly (figure 32)



2. Install the assembled electric lock back to the original lock position and restore the key to enter the lock core (figure 33)



3. Place the motor box on the sheet metal reinforcement inside the door. Joint position need to choose the plane, the motor box below the power cord should be along the door leads to the outer, the diaphragm to straighten out the wiring harness and rolling with fixed light according to the control of glass falling slowly, the watch glass with the motor box and electric Cong harness if there is interference, if no interference phenomenon, with a marker pen marking (figure 34)

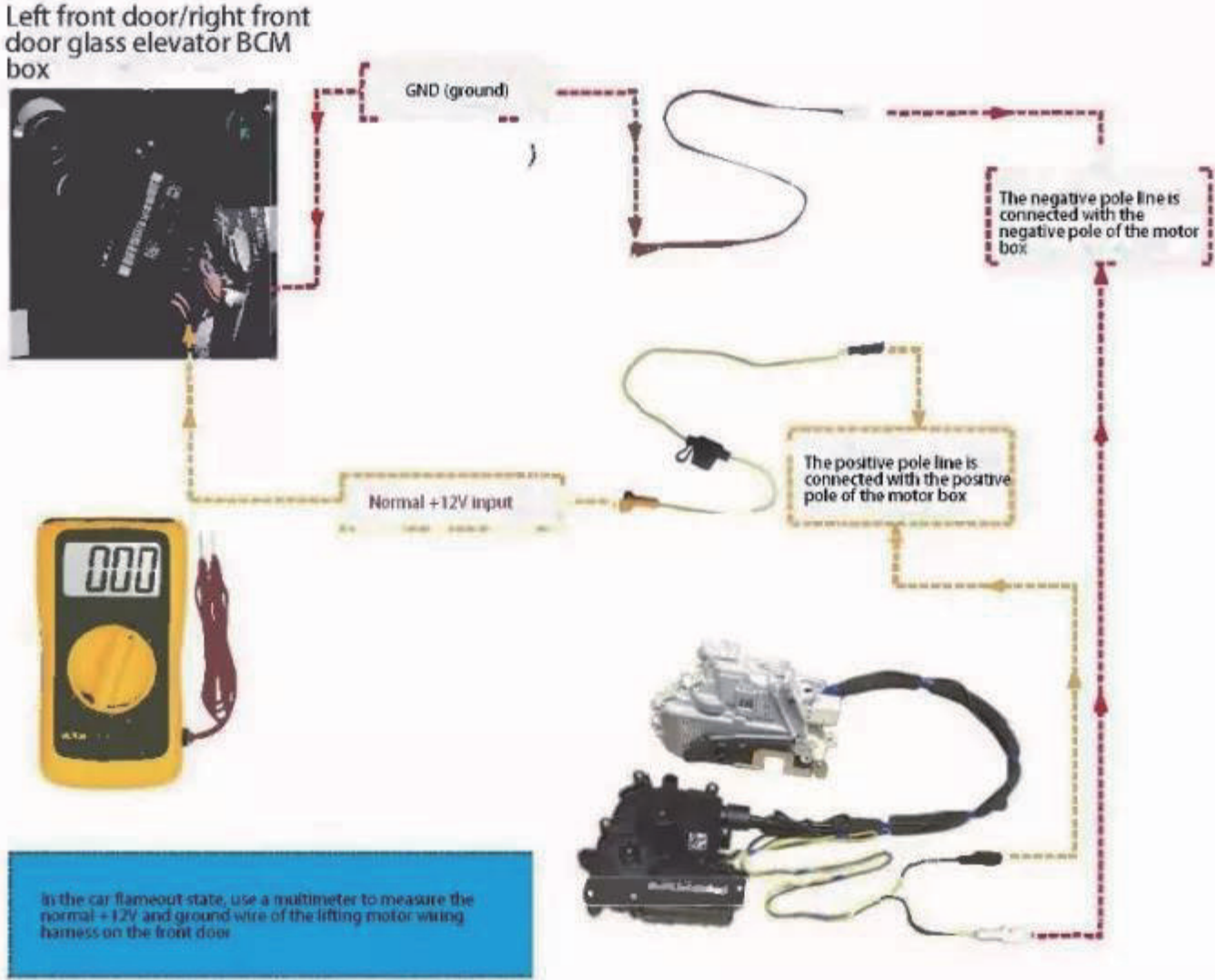


4. Tear 3M glue off the motor box mounting bracket; Note: the material is 3M foam pressure-sensitive adhesive, which has the function of high temperature resistance and shockproof (figure 35).



5. Clean the adhesive plane with cleaning agent, position the motor box, and squeeze the motor box device into the fixed plane by hand for 20 seconds to ensure that the 3M adhesive surface is completely glued to the golden plane of the door (figure 36).

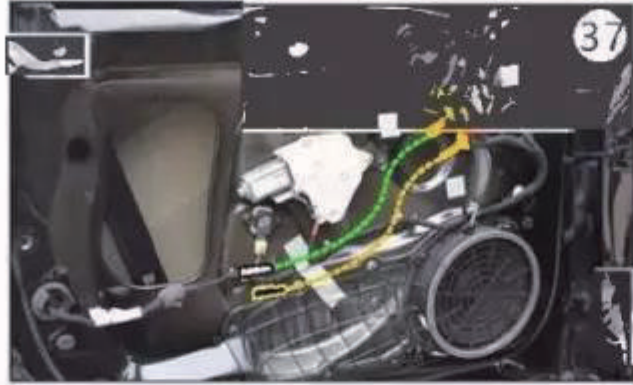
Schematic diagram of electric connection of audi electric suction door (normal power is taken with BCM box for the door)



Matters needing attention

All pictures in this manual are for reference only. There are slight differences between pictures and real objects due to different models, but the installation method is basically the same.

E. Door normal power extraction steps



1. Clip the positive pole of the yellow line to the normal +12V line and the negative pole of the black line to the GND ground wire. Clamp the line clamp in place with pliers. **Note:** during the test, please check whether there is any bad contact phenomenon by shaking the power cord with your hand (the stem is the same in the four steps of electrification) (figure 37).



2 take the motor box beam and wire end for good, is testing whether the electric lock absorption and normal; outside the handle to open the door is normal; as normal; recover back to sound insulation board; and straighten out the surge line XianShuYong fastener belt; note: electric suction door best can put the power cord and plug the power cord go fuse under rose window control volume of space convenient check later. (figure 38)



3. Check whether the wheeze lifting and lifting are normal, and then test whether the electric suction door is closed, the suction door handle is closed, and the door door is opened normally. Restoration of door interior panel (figure 39)



4. Vehicle effect after installation (figure 40)

Matters needing attention All pictures in this manual are for reference only. There are slight differences between pictures and real objects due to different models, but the installation method is basically the same.