

Running Boards Side Steps suitable for
KIA Sportage QL Mk4 (2016-up)



BEFORE

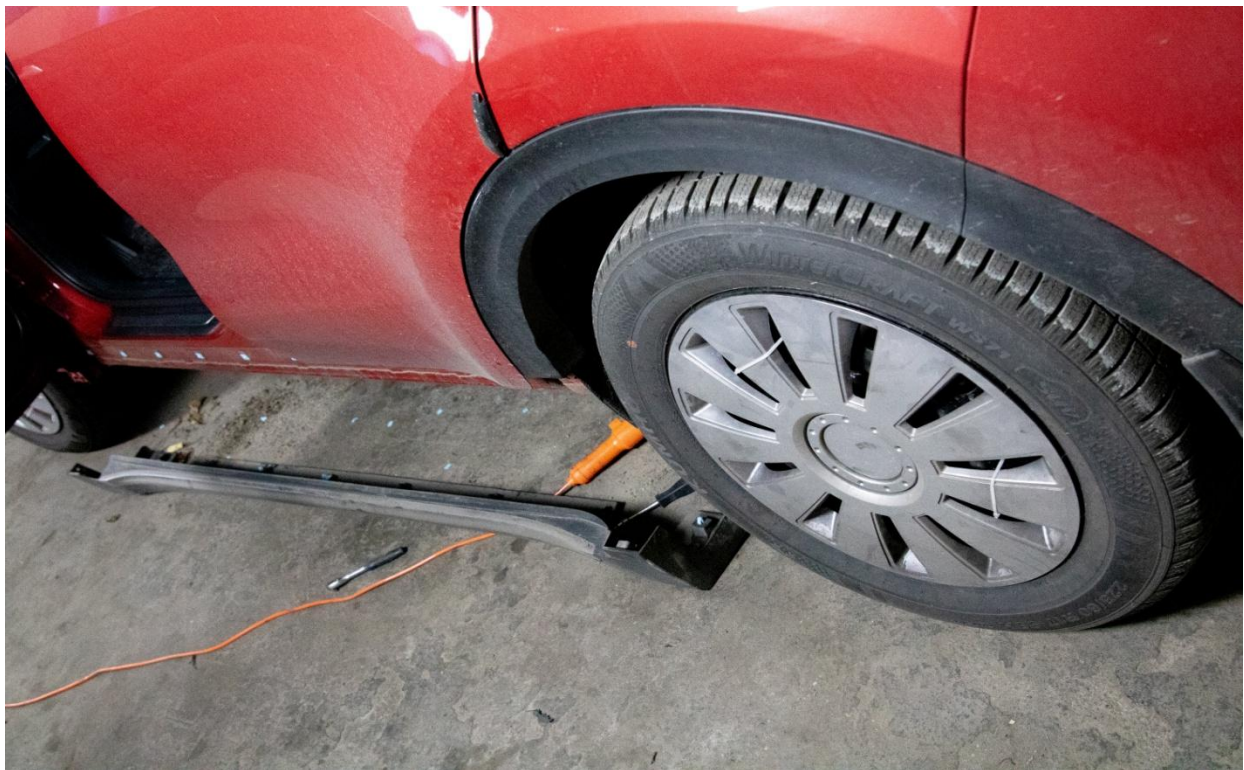


AFTER



1) The removal of the Running Boards Side Steps / Dezasamblarea pragurilor vechi

Undo the screws below and those on the side/Desfaceti suruburile de
dedesubt si cele din lateral



2) Fitting the Running Boards Side Steps/ Montarea Pragurilor

ACCESSORIES/ACCESORII



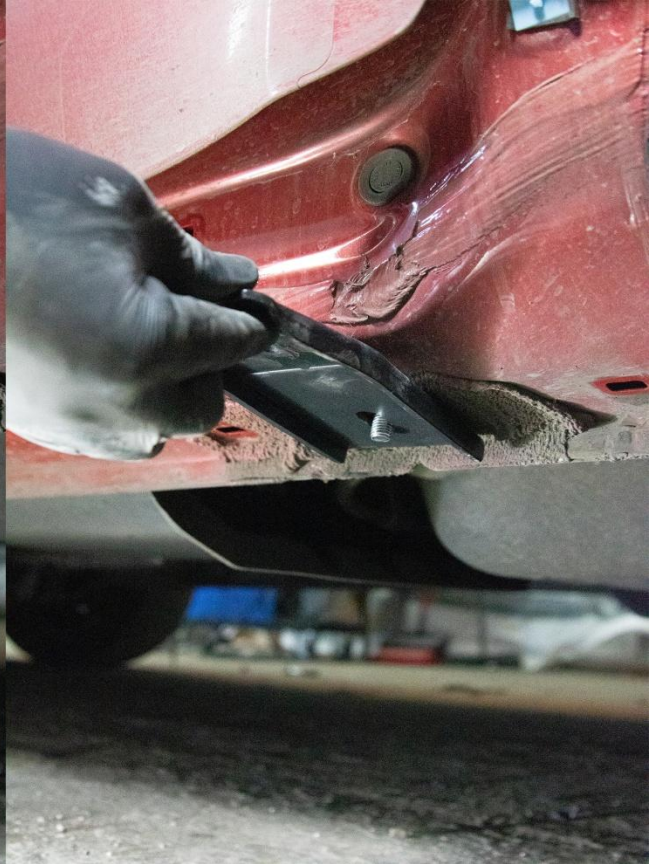
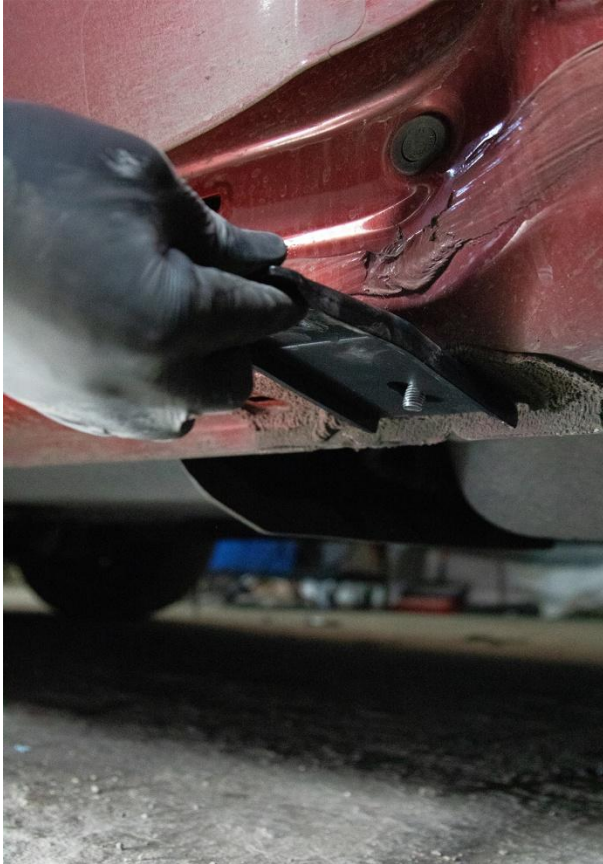
- Put the rivet clips on the side skirts and adjust the screws according to the brackets.
(Puneti clemele pe praguri si aranjati suruburile in functie de prinderile pragurilor)



- Put the screws (4/side) into the holes below the side step and link it to the brackets using screw nuts to tighten the screws below.

(Puneti suruburile in orificiile de sub prag si uniti-le cu bracketii(prinderile pragurilor). Dupa aceea, folositi piulite pentru a strange suruburile de dedesubt)





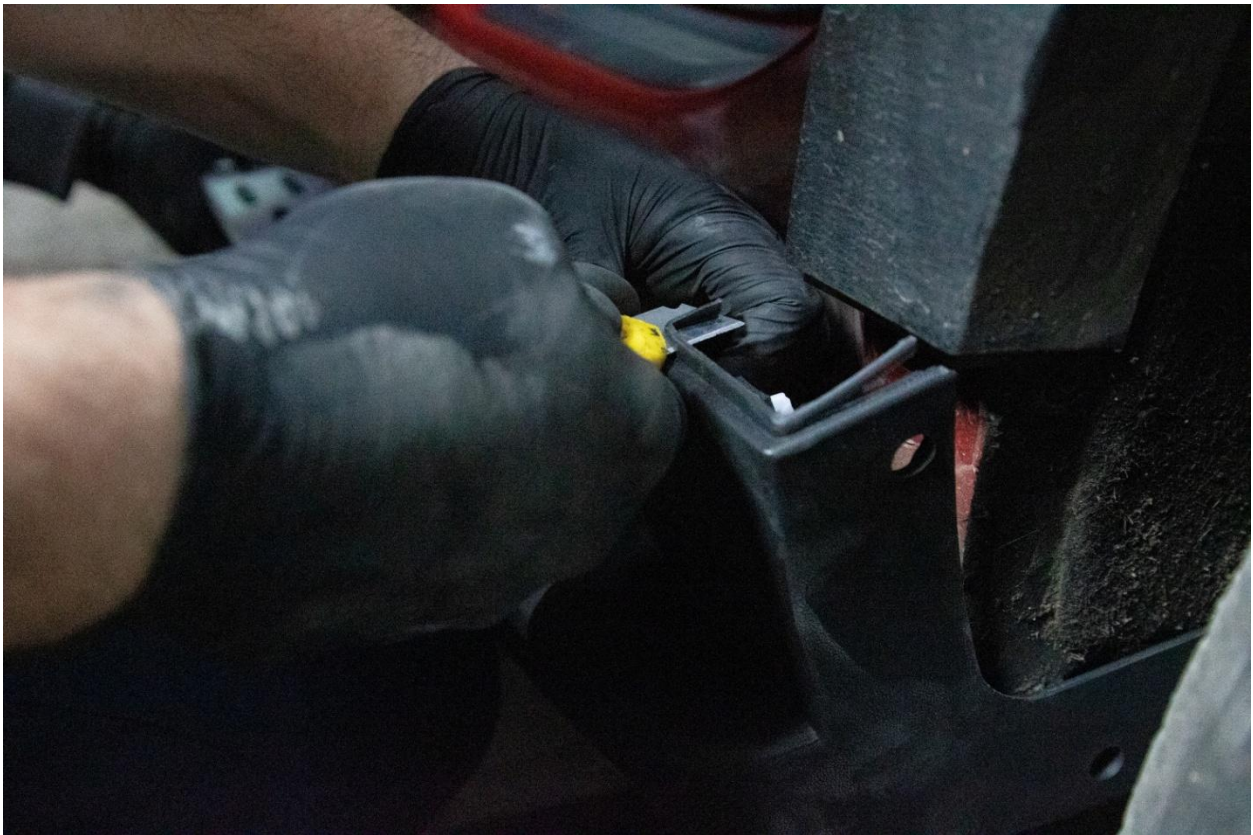
3) Fitting the Running Boards Side Steps/

Montarea Pragurilor



****If the side step doesn't fit well, cut the edges of the running board (the side from the back of the car)***

***Daca pragurile nu se potrivesc pe partea din spate a masinii, taiati marginile pragului.**



- Tighten the screws underneath the Side Steps and from the sides / Strangeti suruburile de sub praguri si pe cele din laterale



4)The result it's kinda great 😊 / Rezultatul este destul de grozav

