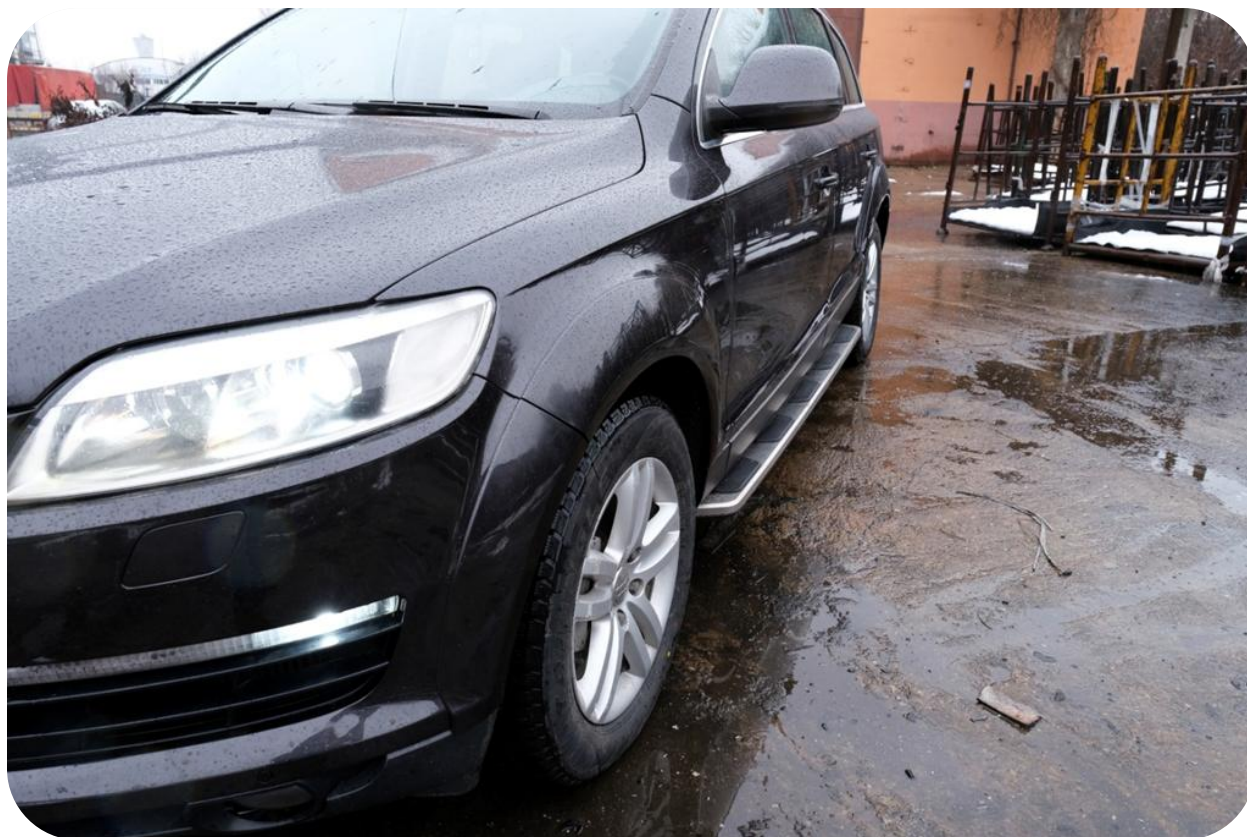


## **Running Boards Side Steps**

**suitable for AUDI Q7 (4L) (2006-2015)**



1. Lift the car on the elevator. / Ridicati masina pe elevator.

2. Loosen the screws for the longitudinal plastic protection / Desfaceti suruburile aferente protectiei longitudinale



3. Remove the plastic longitudinal protection / Indepartati protectia longitudinala



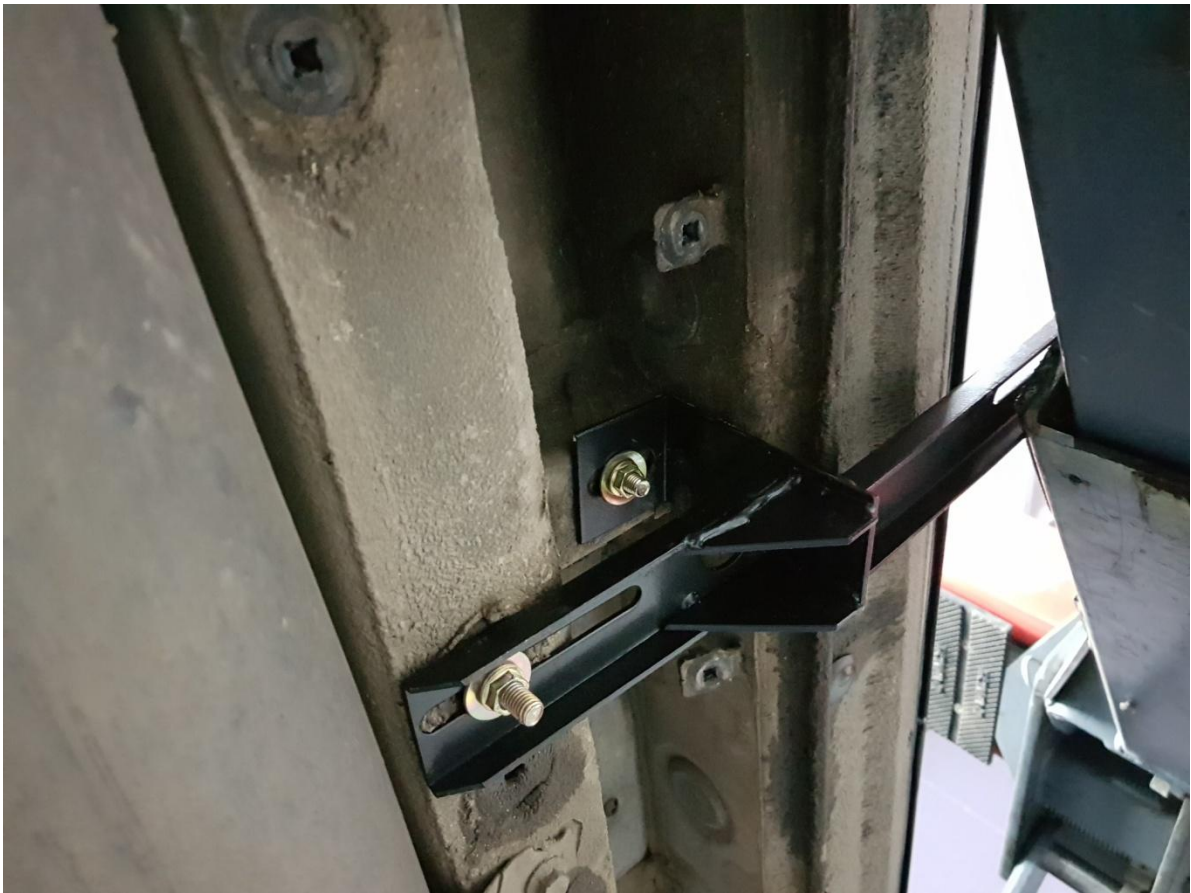
4. Prepare the mounting brackets / Pregatiti bracketii pentru montaj:

KITT Tuning Installation Instructions for RBA010E

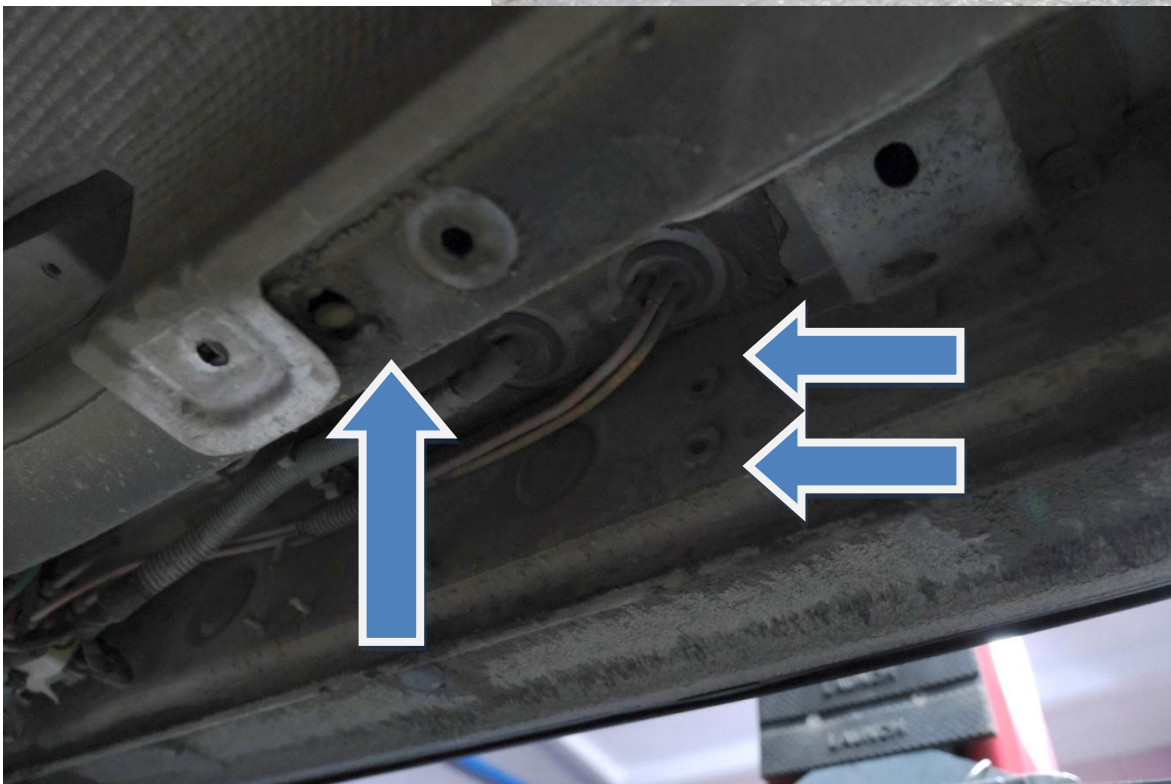


5. To the right rear bracket are added the screws, nuts and mounted in the holes shown. / Bracketului spate dreapta i se adauga suruburile, piulitele si se monteaza in orificiile aratate





6. To the middle right bracket are added the screws, nuts and mounted in the holes shown / Bracketului din mijloc dreapta i se adauga suruburile, piulitele si se monteaza in orificiile aratate



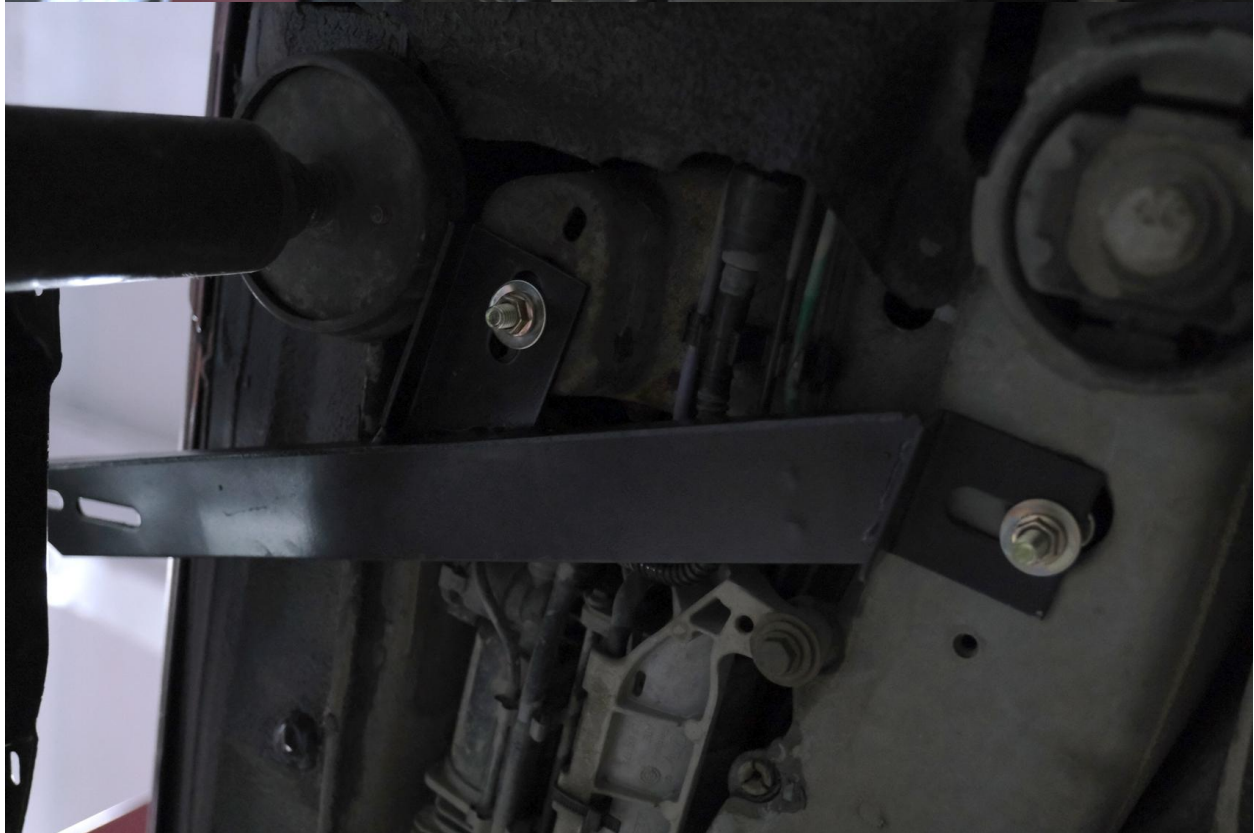
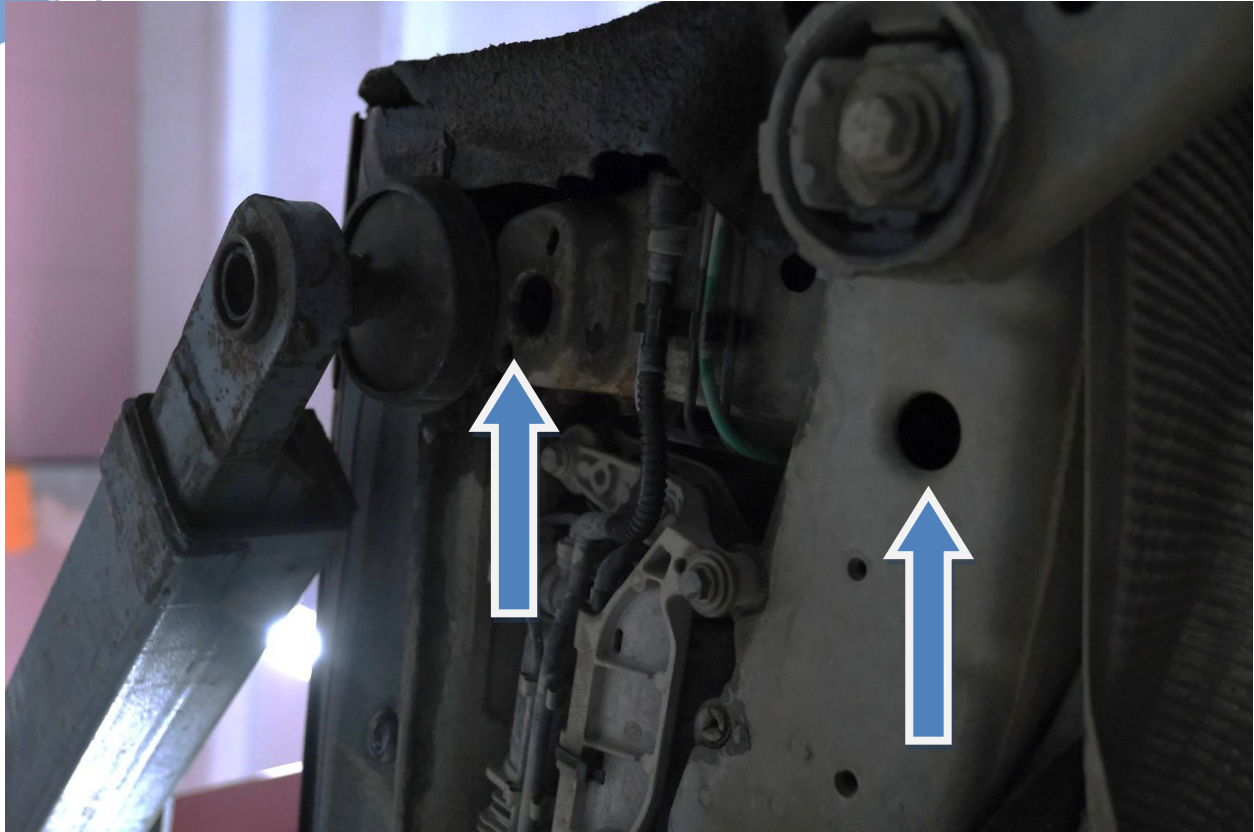






7. To the right front bracket are added the screws, nuts and mounted in the holes shown. /  
Bracketului din fata dreapta i se adauga suruburile, piulitele si se monteaza in orificiile





8. Mount the longitudinal plastic protection. Additional modifications (cutting / cropping) needed. / Montați protecția longitudinală din plastic. Sunt necesare modificări suplimentare (taiere / decupare).



9. Position the screws underneath the side steps according to the position of the brackets and tighten the screws to the boards / Pozitionați adecvat șuruburile sub treptele laterale în funcție de poziția suporturilor și strângeți șuruburile pe treptele laterale









10. Repeat for the other part / Repetati pentru lateral cealalta

Ready for the road!





