





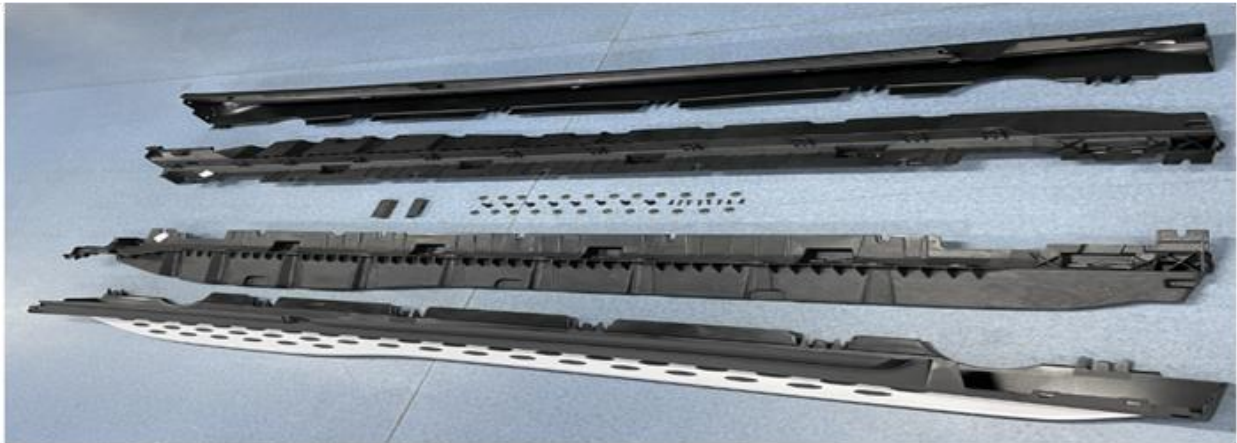
To facilitate your installation, please read the product instruction manual carefully before installation.

Accessories:

No.	Qty.	Details
1	2	Side step assembly (left and right symmetry)
2	2	 Lined skeleton (left and right symmetry)
3	2	 Side step sealing plate (left and right symmetry)
4	8	 buckle
5	24	 M6 nut with pad

## Running Boards Side Steps suitable for Mercedes GLC-Class X254 Coupe C254 (2022-up)

Code RBMBX254



Installation steps: (The installation steps on the left and right are the same, only the installation method on the right is described.)

**Step 1:** Remove the original car skirt.

**Step 2:** Remove the middle clip on the inner side of the original car skirt (for backup), and remove the plastic buckle on the sheet metal part (for backup) Remove the small plastic bracket (not needed) on the upper and rear section of the sheet metal part as shown in the picture below.



**Step 3:** Open the car door, fix the lining frame on the car and tighten it.

Picture 4



**Step 4:** Cut off the middle section of the pedal shell according to the dotted line in Figure 5 and install the spare clamp in Figure 1 at this position (Figure 6). Then install the removed buckle in Figure 2 on the inside of the pedal shell (Figure 7).

Picture 5



Picture 6

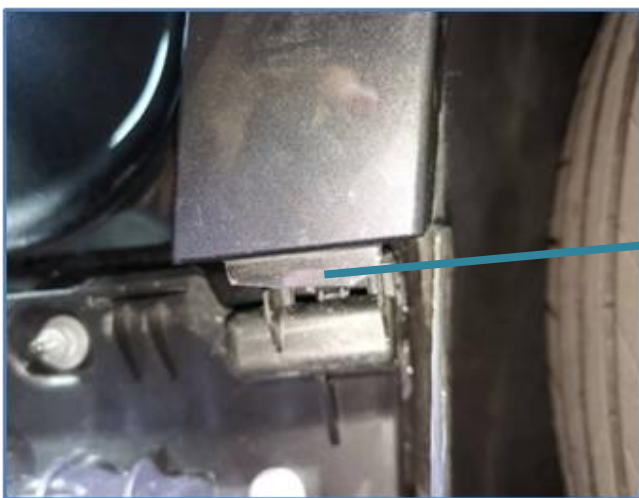


Picture 7



**Step 5:** Cut off part of the rear wheel eyebrow tab (remaining 3MM, cut off the rest)

Picture 8.



3MM remaining

**Step 6:** Install the pedal shell (Picture 9) and lock the bottom nut (install the rear section first) (Picture 10).

Picture 9



Picture 10



**Step 7:** Check whether all screws are tightened, pack the tools, and the installation is complete.

**Step 8:** Repeat on the other side

Disclaimer: Our company is not responsible for any related problems and losses caused by improper installation and use.

Covered by warranty.