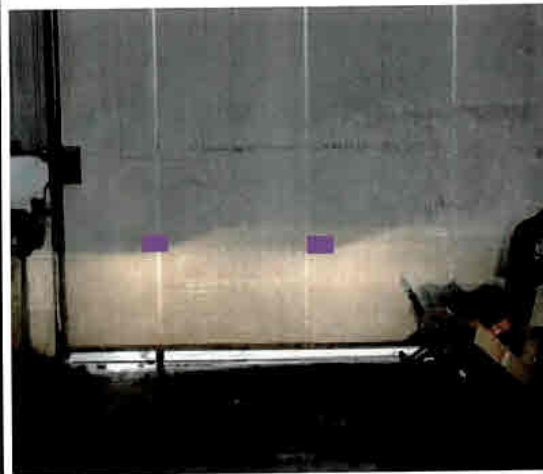


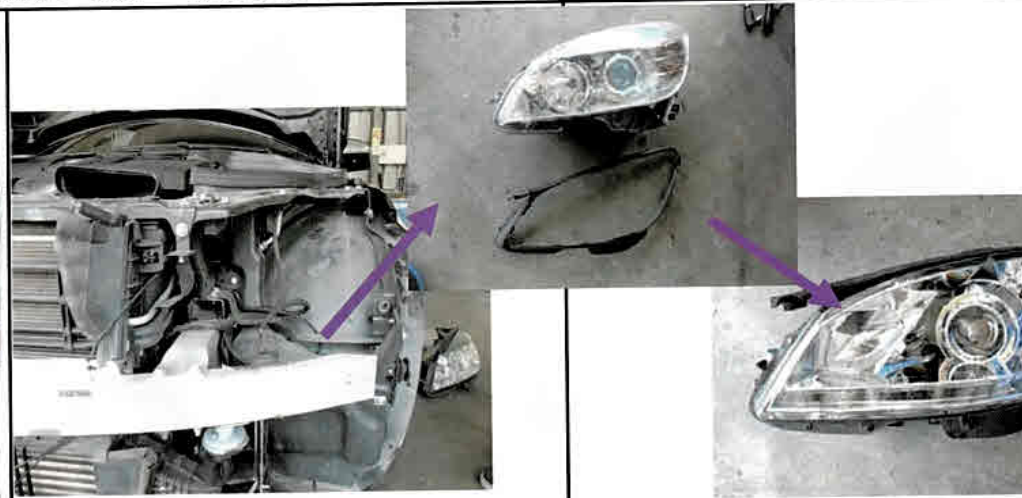
Installation Manual for BZ139Z4



STEP 1:
move the car to flat and broad place, the car head should be 6-8 meters away from the wall

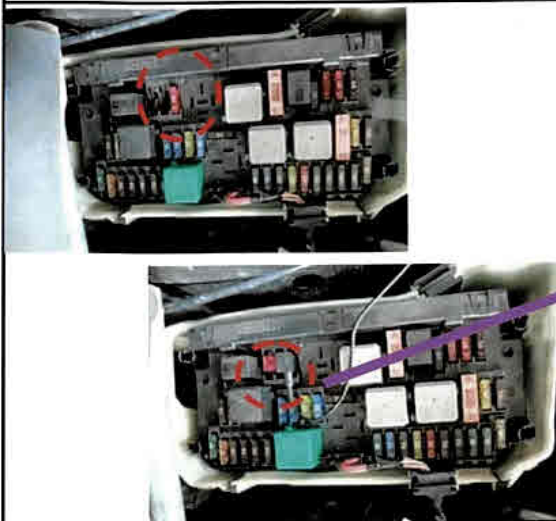


STEP 2:
turn on the low beam, mark the cut-off line position on the wall, as the picture

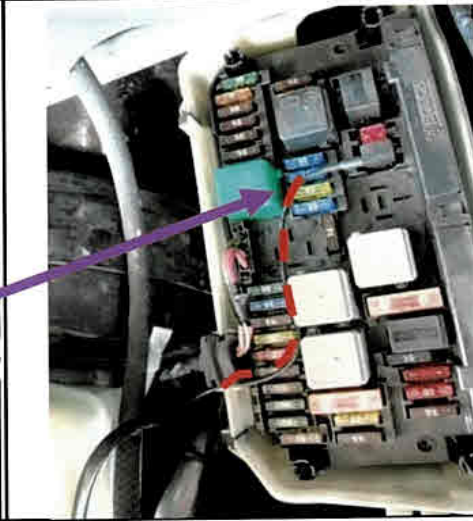


STEP 3:
tear down the original bumper and headlamp

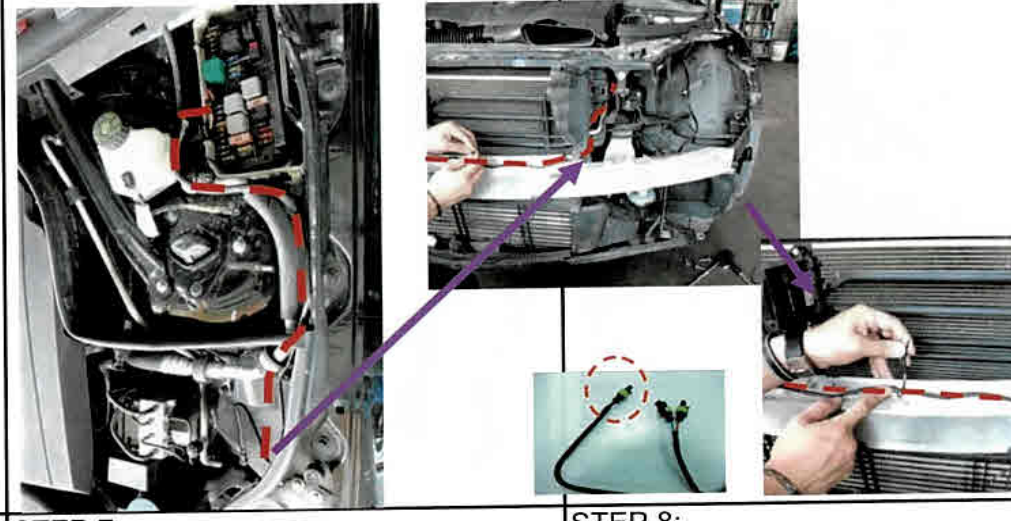
STEP 4:
tear down the side edge band of original lamp to put on EE head



STEP 5:
remove the 10A fusewire (refer to the red circle place, and keep the fusewire for spare using). Take harness with fusewire from parts kit, plug into fuse box



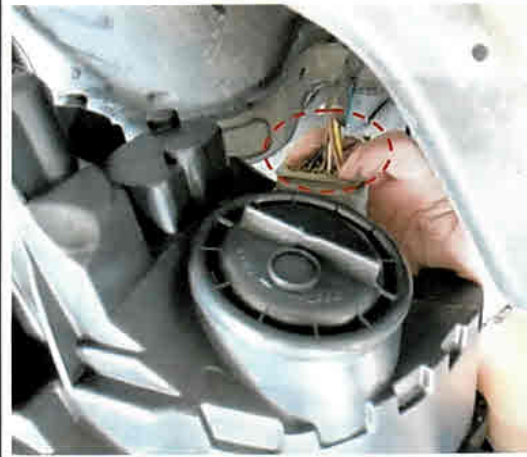
STEP 6:
pull out the fuse harness from the left side of fuse box



STEP 7:
pull fuse harness along flat cable to the LEFT side headlamp position

STEP 8:
take the longer harness from the kit. Take the red circle side of the picture, from Right side lamp along bumper to Left side lamp, and use attached cable tie to fix the wire on bumper

Installation Manual for BZ139Z4

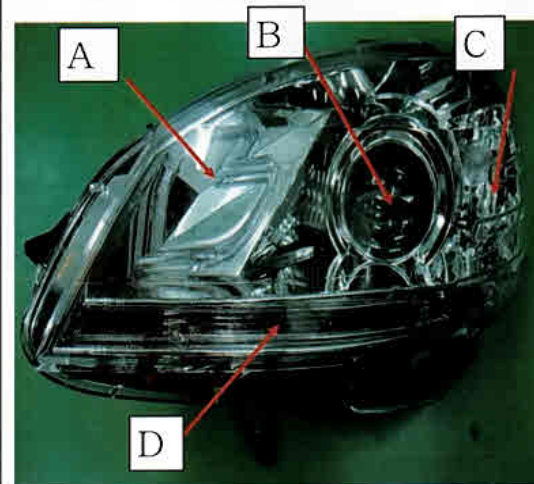
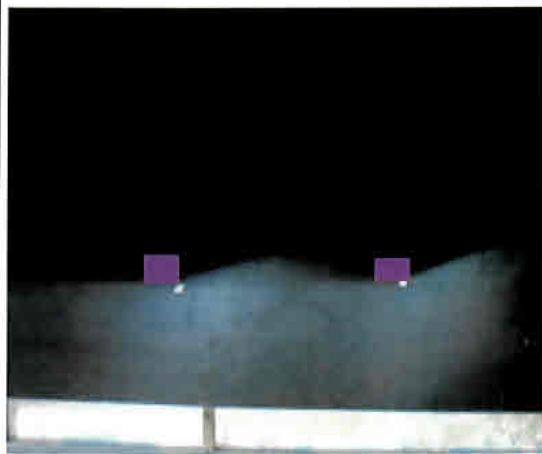


STEP 9:
take the longer harness from parts kit to plug in the harness plug of headlamp (same way in Left and Right side)

STEP 10:
plug the EE lamp harness in car body socket (same way in Left and Right side)

STEP 11:
lock the EE headlamp to the plate metal of car body

STEP 12:
lock the bumper onto the car



STEP 13:
adjust optical axis position (to the marked position of step 2)

STEP 14:
check the functions of lamp
A - parking light :LED White
B - low/high beam: H7 bulb
C - direction light: PY21W Amber
D - DRL/parking light: LED White