

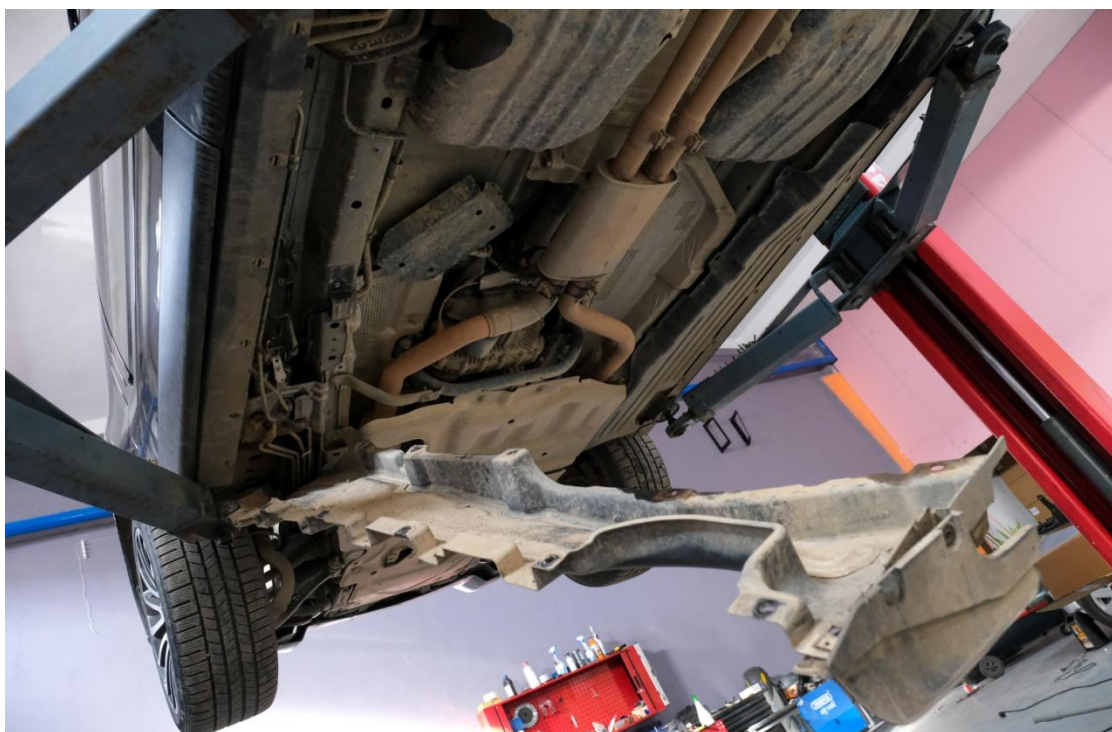
**Power Electric Running Boards Side Steps Retractable suitable
for Range Rover Vogue L405 (2014-2015) Sport L494 (2013-2015)
SWB (RBRR05EL)**



1) The removal of the side skirts shield / Demontarea scuturilor pragurilor vechi

Undo the screws below and those on the side

(Desfaceti suruburile de dedesubt si cele din lateral)



2) Wiring System/

(Montarea cablajelor electrice)

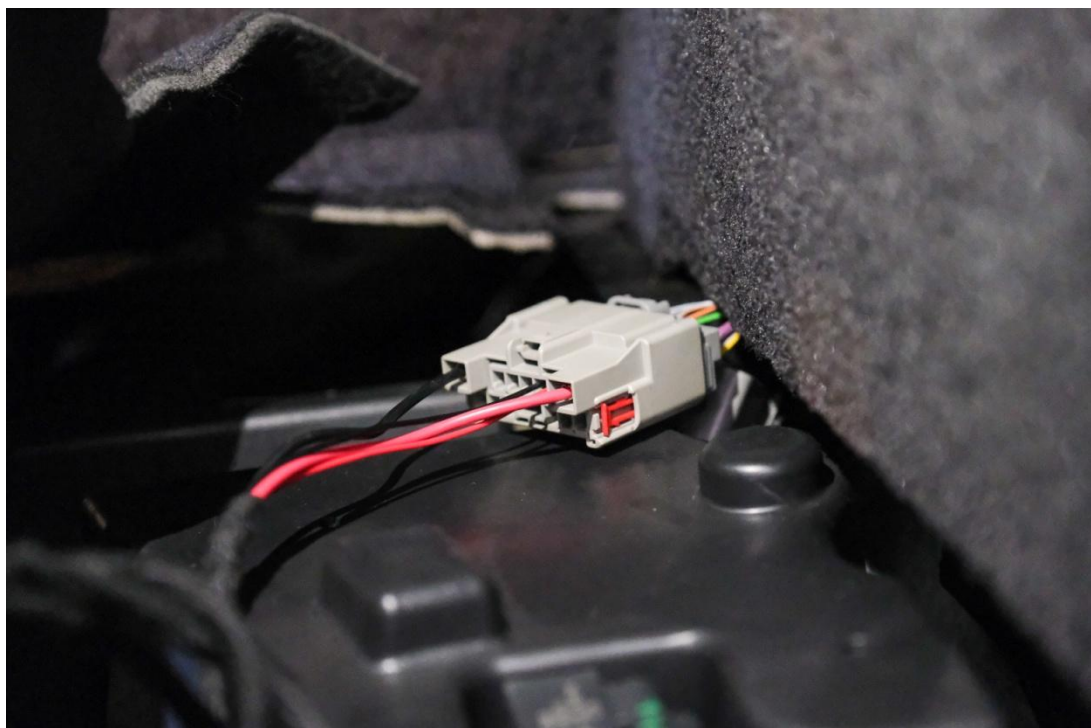
- On the back of the car between the wing and the seat, open the housing on each side so that you can pull the cable from the trunk to the bracket

(Pe partile din spate ale masinii dintre aripa si bancheta, desfaceti carcasa pentru a putea trage cablul din portbagaj la bracket)



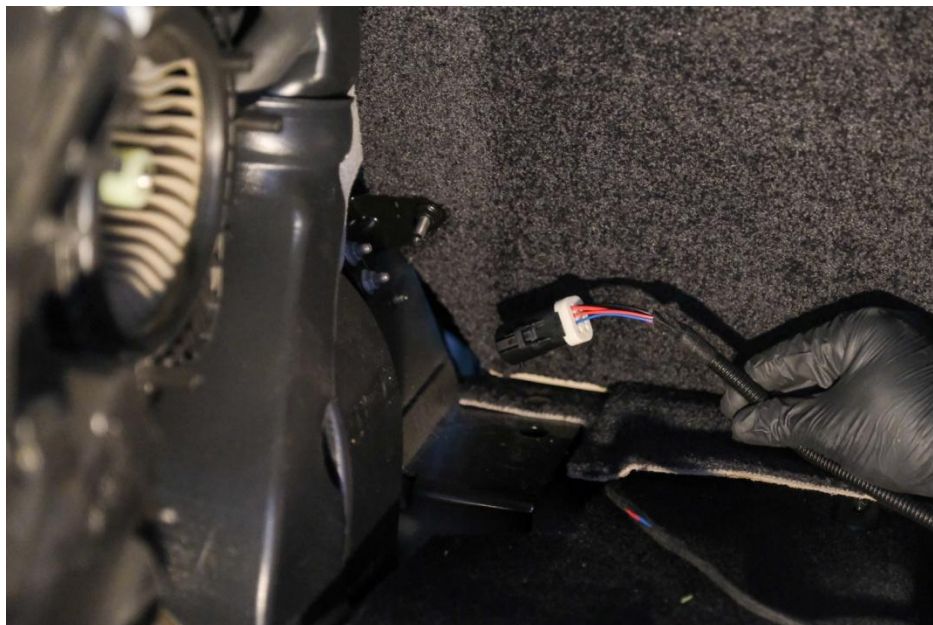
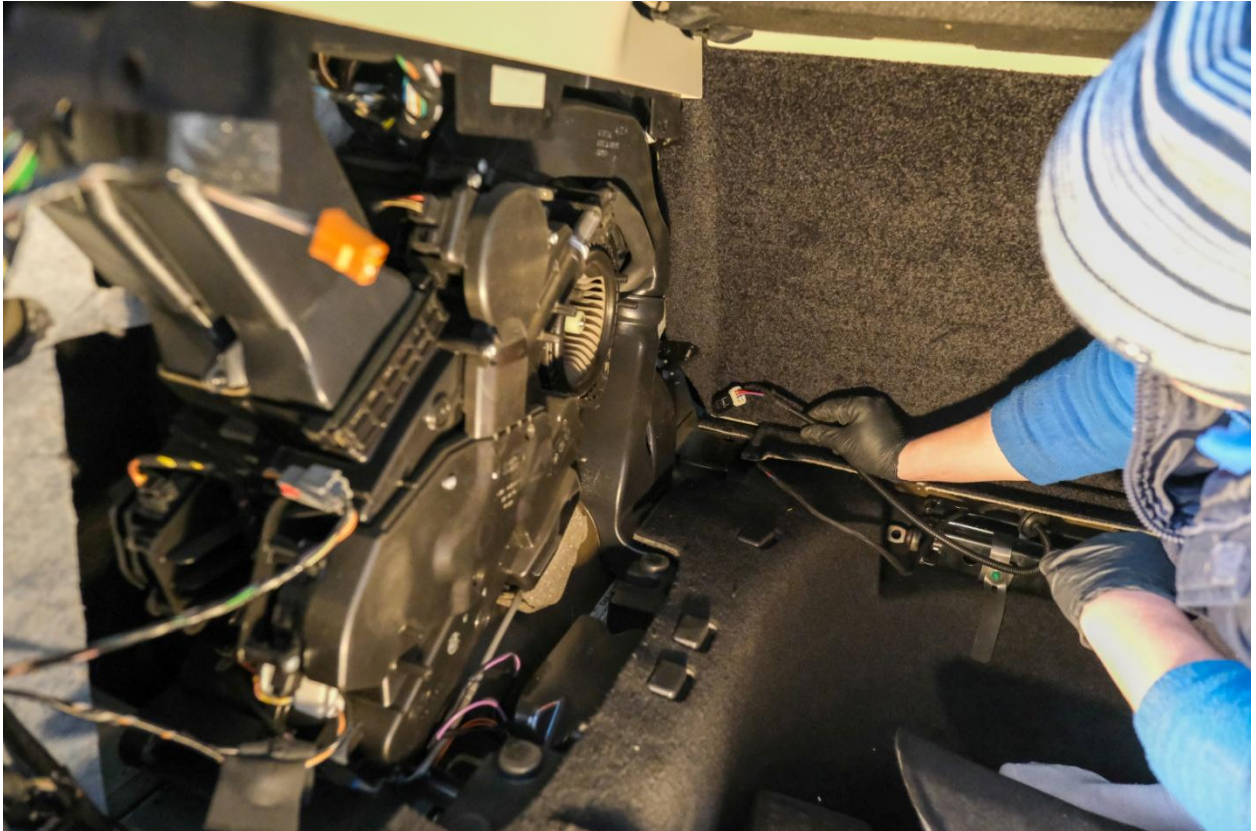
- **Connect the side steps cable to the car's computer that you can find in the trunk's car (in the right-hand corner).**

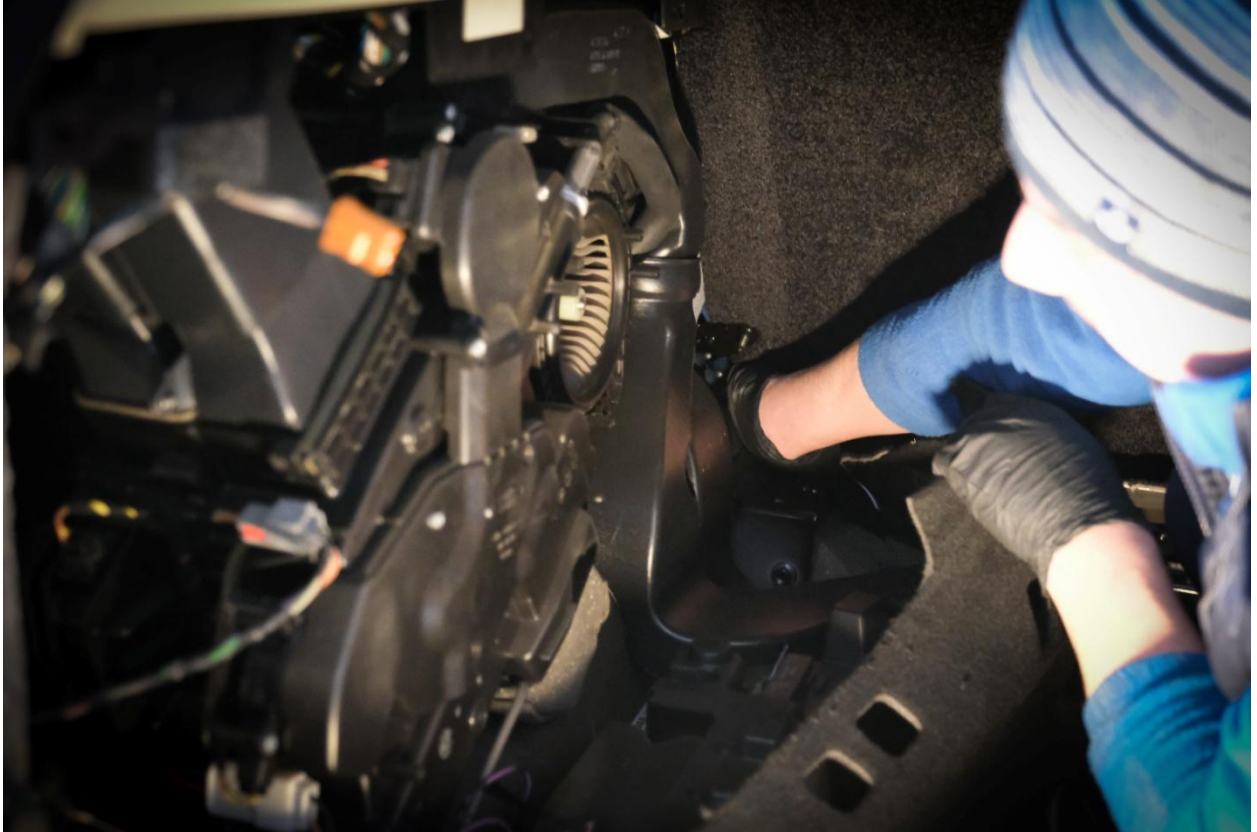
(Cuplati cablul pragurilor cu calculatorul masinii care se afla in portbagaj in coltul din dreapta)



- **Be aware of the cable dimensions, the one that is longer has to go on the left side of the car (as you look at the back of the car) and the shorter one on the right side of the car, through the corner of the trunk in to the housing of the side steps between the fender and the seats. It has to connect with the brackets.**

(Fiti atenti la dimensiunile cablurilor pragurilor, cel mai lung trebuie tras pe partea stanga a masinii (cum te uiti la ea din spate), iar cel mai scurt pe partea dreapta a masinii, prin colturile portbagajului, prin orificiul (din interior) dintre aripa si bancheta masinii, pentru a fi conectate cu bracketii)

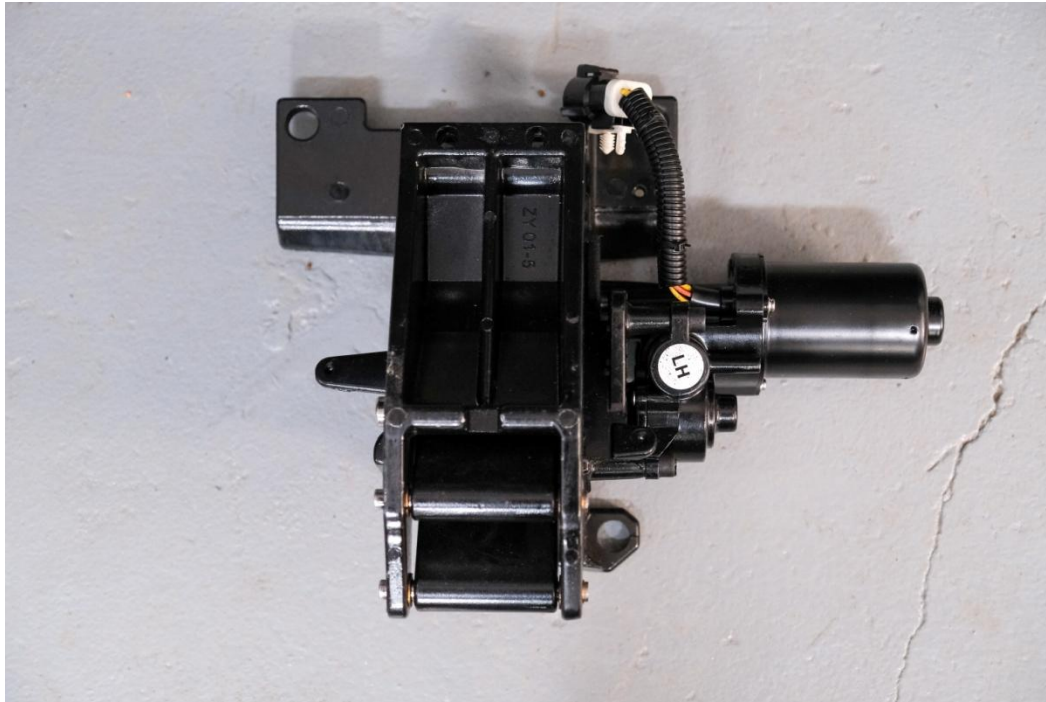






3) Fitting the Running Boards Side Steps/ (Montarea Pragurilor)

ACCESSORIES/ACCESORII



- Put the brackets on the holes below the side step and link them to the car using screw nuts to tighten the screws below.

(Puneti bracketii (prinderile pragurilor) pe orificiile de sub prag si uniti-le cu masina, folosind piulite pentru a strange suruburile de dedesubt)



- On the rear (left and right) sides of the car, connect the wiring pulled from the trunk with the brackets under the side steps.

(Pe partile din spate (stanga-dreapta) ale masinii, conectati cablajul cu bracketii)

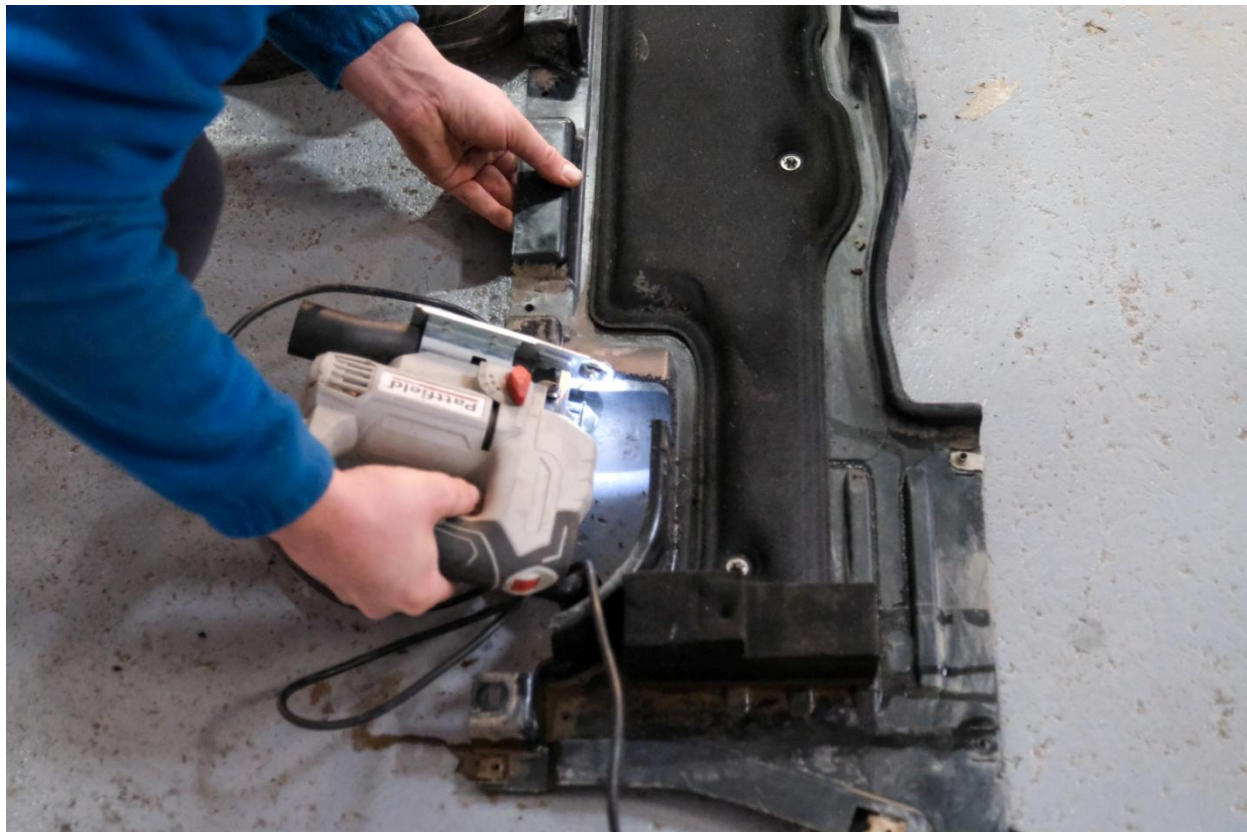




- **Cut the side steps shield to match the form of the brackets**

(Decupeaza scutul pragului pe forma bracketilor)





- **Secure the shield under the car (on each side) with screws.**

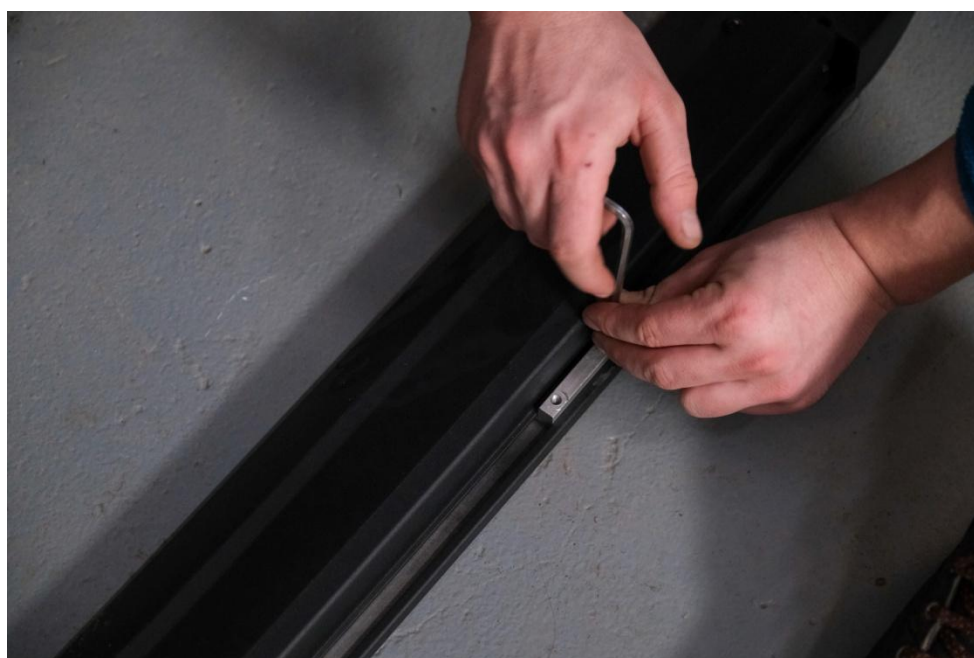
(Fixati scutul sub masina (pe fiecare parte) cu suruburi)





- **Undo the screws on the side steps and fit the side steps on the brackets on each side and then secure them with the same screws**

(Desfaceti suruburile de pe praguri si fixate-le pe bracketii de pe fiecare parte a masinii, urmand a le securiza cu suruburi)







4)The result it's kinda great 😊

(Rezultatul este destul de grozav)



***Full electric running boards equipped with control module and motors.
The module included, will eject the running boards each time a door is opened.**

(Praguri electrice complet echipate cu modul de comanda si motoare. Modulul inclus va scoate pragurile de fiecare data cand se deschide o usa)

You have to remove the old carcass and replace it with the new one (plug&play)

(Trebuie sa scoti vechea caracasa si sa o inlocuiesti cu cea noua)

